

# **RoweMed**

Medical 4 Life

Catalog of products  
Liquid Management  
October 2023



## Contents

*Company Profile*

6 - 11 *Extension Lines*

12 - 17 *Infusion Systems*

18 - 21 *Transfusion Systems*

22 - 26 *Tubing Systems Cardiology, Radiology*

27 - 40 *Spikes*

41 - 51 *Hydrophilic & Hydrophobic Filters*

52 - 53 *Components & Parts*

## Company Profile

### RoweMed AG

RoweMed AG – Medical 4 Life is a medium sized innovative MedTech company. Our focus is on developing and producing customized medical plastic systems, especially for the handling of sensitive pharmaceuticals.



### Company Profile

For our customers we offer turnkey projects: R&D, MASS PRODUCTION, REGULATORY AFFAIRS. Our Quality Management System is certified according to DIN EN ISO 13485 and FDA 21 CFR Part 820. Our clean room production in Parchim (Germany) is certified according to ISO class 7.



### R & D

The development of our systems is closely coordinated with the customer, from first sketch up to a market-ready product, including CAD construction, prototyping, product testing. We also offer serial production and full documentation. We guarantee the highest standard in order to fulfill the most demanding requirements for medtech, pharma and biotech industries.

### Production

We offer injection molding, assembling & packaging under one roof. In the cleanroom production facility (ISO class 7) in Parchim our employees carry out single-part, small series & automated mass production. In our facility all common welding & gluing technologies are implemented. Our production concept is based on high flexibility. The combination of automated manufacturing of components and individual processes allows a cost efficient and high quality production.

### Regulatory Affairs

RoweMed fulfills all regulatory requirements from authorities and notified bodies. We have more than 20 years experience in product approval of medical devices and disposables. In addition to our technical services we offer the complete technical documentation according to the requirements of the Council Directive 93/42/EEC and for the US market 21 CFR part 820. RoweMed is in the initial certification process according to MDR EU 2017/745 and successfully completed stage II on site audit. We expect our certification in 2023.

### RoweMed AG - Medical 4 Life

Juri-Gagarin-Ring 4  
19370 Parchim  
Germany

Phone +49 (0) 3871 451280  
Fax +49 (0) 3871 451282

E-mail [info@rowemed.de](mailto:info@rowemed.de)  
Web [www.rowemed.de](http://www.rowemed.de)

## Qualifications

Our quality management system is certified according to DIN EN ISO 13485:2016.

Quality management system in compliance with the Council Directive 93/42/EEC, annex II for the following products:

- Infusion Filters / Injection Filters
- Infusions Systems
- Injection Systems
- Transfusion Systems
- Tubing Systems for Infusion, Injection, Nutrition and Transfusion
- Tubing Systems for Angiography, Cardiology and Radiology
- Laserablation Sets
- Autologous Re transfusion Sets
- Tubing Sets / Dental Irrigation Tubings
- Irrigation and Suction Sets for Orthopaedics
- Urinary Bladder Puncture Set

Quality management system in compliance with the Council Directive 93/42/EEC, annex V for the following products:

- Spikes
- Cover Foil
- Catheter Valves
- Hydrophobic Filters
- Transfer Systems

Besides fulfilling the DIN EN ISO 13485:2016 standards, we also comply with FDA 21 CFR Part 820.



## *Extension Lines*



Extension Lines are available in different tubing materials (PVC, PE, PUR), tube diameters (0.6 x 2.0 / 1.0 x 2.0 / 1.5 x 2.7) mm and length from 10 cm up to 800 cm. We are able to realize individual customer demands. Variants with filter, injection adaptors, check valves, clips, stop cocks, Y- and T-connectors are also available.

## Extension Lines



### RoweInjectLine

Art.-No.	Material (tube)	Length (cm)	Tubing Ø (mm)	Filling volume (ml)	Connection	PU ((pcs./box) / pal.)
A-1000	PVC	150	1.5 x 2.7	2.6	fLL/mLL	200 / 19,200
A-1001	PVC	200	1.5 x 2.7	3.5	fLL/mLL	200 / 16,000
A-1003	PVC	300	1.5 x 2.7	5.3	fLL/mLL	200 / 11,200
A-1007	PUR	150	1.5 x 2.7	2.6	fLL/mLL	200 / 19,200
A-1008	PUR	200	1.5 x 2.7	3.5	fLL/mLL	200 / 16,000
A-1009	PUR	300	1.5 x 2.7	5.3	fLL/mLL	200 / 11,200
A-1015	PUR	30	1.5 x 2.7	0.6	fLL/mLL	100 / 4,800
A-1016	PUR	50	1.5 x 2.7	0.9	mLL/mLL	100 / 4,800
A-2212	PVC	700	1.5 x 2.7	12.4	fLL/mLL	50 / 5,600

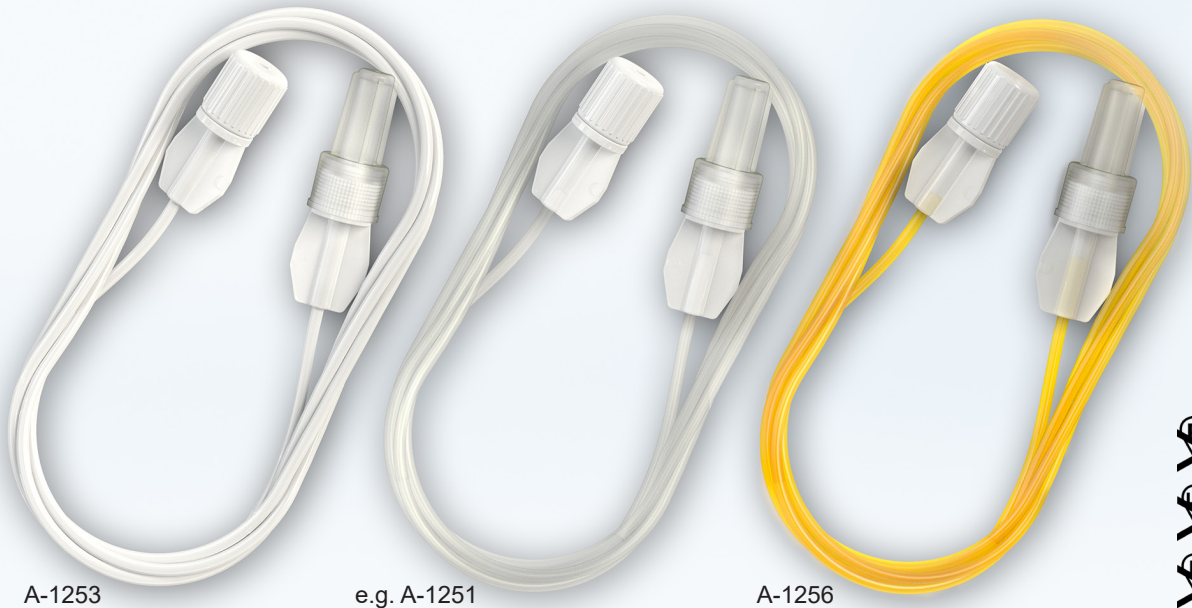
- Can be used for the infusion of liquid drugs and solutions (gravity or syringe pumps)
- Can be connected to additional systems easily
- Compatible with all Luer-Lock connectors
- Transparent connectors / line
- Visual drug flow control

Made in Germany

ISO 13485



## Extension Lines



A-1253

e.g. A-1251

A-1256



## RoweInjectLine

Art.-No.	Material (tube)	Length (cm)	Tubing Ø (mm)	Filling volume (ml)	Connection	Specifics	PU ((pcs./box) / pal.)
A-1251	PE	150	1.0 x 2.0	1.2	fLL/mLL	visual drug flow control	100 / 11,200
A-1252	PE	200	1.0 x 2.0	1.6	fLL/mLL	visual drug flow control	100 / 11,200
A-1253	PE	150	1.0 x 2.0	1.2	fLL/mLL	light protected line	100 / 11,200
A-1254	PE	300	1.0 x 2.0	2.4	fLL/mLL	visual drug flow control	100 / 11,200
A-1255	PE	250	1.0 x 2.0	2.0	fLL/mLL	visual drug flow control	100 / 11,200
A-1256	PE	200	1.0 x 2.0	1.6	fLL/mLL	yellow	100 / 11,200

- Can be used for the infusion of liquid drugs and solutions (gravity or syringe pumps)
- Compatible with all Luer-Lock connectors
- Can be connected to additional systems easily
- Inert polyethylene

Made in Germany

ISO 13485



## Extension Lines



## RoweMicroLine

Art.-No.	Material (tube)	Length (cm)	Tubing Ø (mm)	Filling volume (ml)	Connection	Specifics	PU ((pcs./box) / pal.)
A-1100	PVC	30	1.0 x 2.0	0.2	fLL/mLL	-	800 / 12,800
A-1101	PVC	150	1.0 x 2.0	1.8	fLL/mLL	with RowePhil 25/5.0 <sup>♦</sup>	50 / 5,600
A-1102	PVC	150	1.0 x 2.0	1.8	fLL/mLL	with RowePhil 25/0.2 <sup>*</sup>	50 / 5,600
A-1103	PVC	30	0.6 x 2.0	0.16	fLL/mLL	-	800 / 12,800
A-1104	PVC	150	0.6 x 2.0	1.3	fLL/mLL	with RowePhil 25/5.0 <sup>♦</sup>	50 / 5,600
A-1105	PVC	150	0.6 x 2.0	1.3	fLL/mLL	with RowePhil 25/0.2 <sup>*</sup>	50 / 5,600
A-1150	PUR	30	1.0 x 2.0	0.2	fLL/mLL	-	800 / 12,800
A-1151	PUR	150	1.0 x 2.0	1.3	fLL/mLL	-	800 / 12,800
A-1154	PUR	15	1.0 x 2.0	0.15	fLL/mLL	-	800 / 12,800

- Can be used for the infusion of liquid drugs and solutions (gravity or syringe pumps)
- Compatible with all Luer-Lock connectors
- Can be connected to additional systems easily
- Transparent connectors / line
- Visual drug flow control

<sup>♦</sup>PET - mesh

<sup>\*</sup>positively charged nylon membrane with endotoxin retention

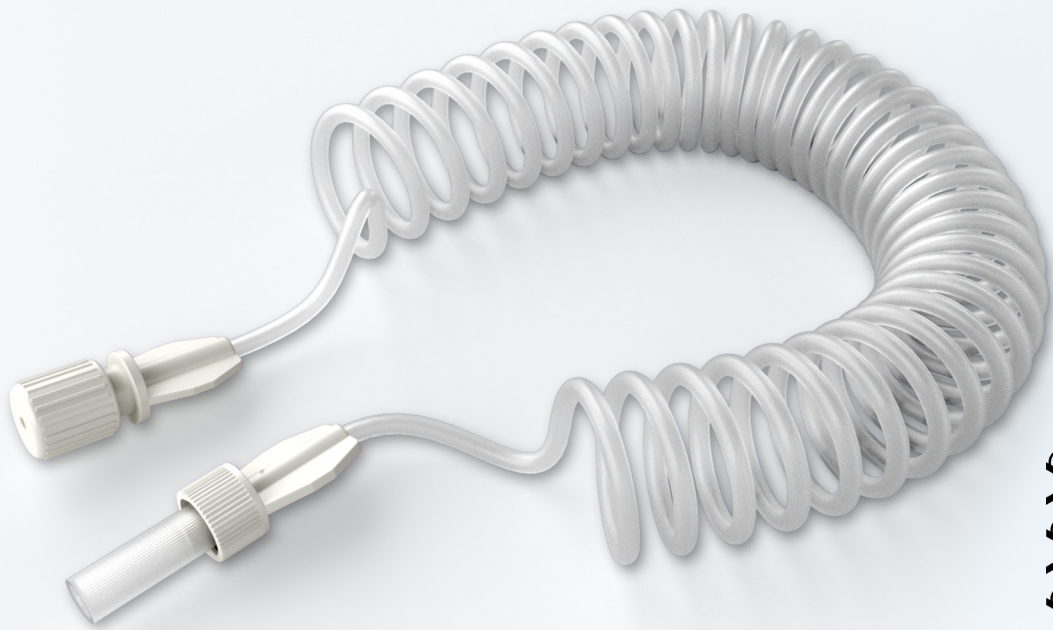
Made in Germany

ISO 13485





## Extension Lines



### RoweSpiralLine

Art.-No.	Material (tube)	Length (cm)	Tubing Ø (mm)	Filling volume (ml)	Connection	PU ((pcs./box) / pal.)
A-1225	PE	600	1.0 x 2.0	4.8	fLL/mLL	50 / 5,600
A-1226	PE	150	1.0 x 2.0	1.2	fLL/mLL	100 / 11,200
A-1227	PE	800	1.0 x 2.0	6.3	fLL/mLL	50 / 5,600
A-1228	PE	700	1.5 x 2.7	12.4	fLL/mLL	50 / 5,600
A-1229	PE	300	1.0 x 2.0	2.4	fLL/mLL	50 / 5,600
A-1230	PE	400	1.0 x 2.0	3.2	fLL/mLL	50 / 5,600

- A transfer line for liquid drugs and solutions (gravity or syringe pumps)
- Compatible with all Luer-Lock connectors
- Can be connected to additional systems easily
- Visual drug flow control
- Increased mobility, flexible arrangement of tubing
- Inert polyethylene

ISO 13485 Made in Germany



## Extension Lines



### RoweInfuLine (Type Heidelberger)

Art.-No.	Material (tube)	Length (cm)	Tubing Ø (mm)	Filling volume (ml)	Connection	PU ((pcs./box) / pal.)
A-2200	PVC	75	3.0 x 4.1	5.3	fLL/mLL	200 / 11,200
A-2201	PVC	140	3.0 x 4.1	10.0	fLL/mLL	200 / 9,600
A-2202	PVC	30	3.0 x 4.1	2.2	fLL/mLL	200 / 11,200

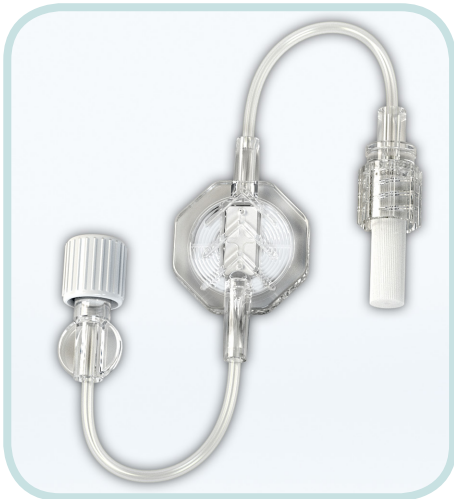
- Can be used for the infusion of liquid drugs and solutions (gravity or syringe pumps)
- Compatible with all Luer-Lock connectors
- Can be connected to additional systems easily
- Transparent connectors
- Visual drug flow control
- Filling volume: 7 ml/m

Made in Germany

ISO 13485

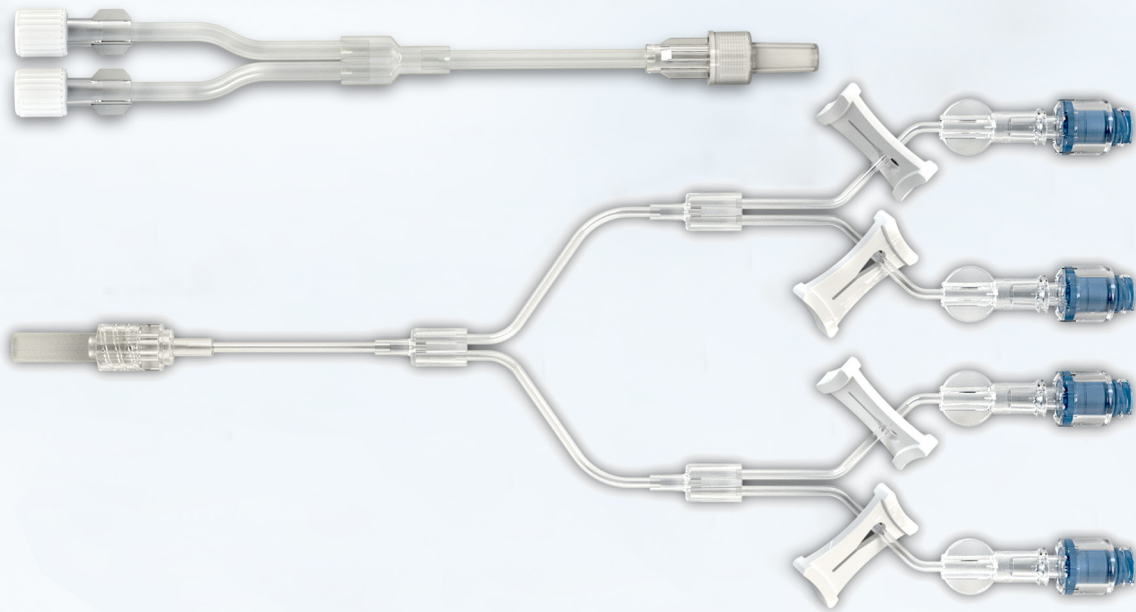


## *Infusion Systems*



A variety of infusion products ranging from standard PVC-lines to specialized tubings and infusion-sets are available. We are specialized in realizing customized requirements. Applications as the stopcock, the 3-fold and 5-fold manifolds complete the product range. Different tubing diameters are also available.

## Infusion Systems



### RoweInfuLine LS-fold

Art.-No.	Material (tube)	Length (cm)	Tubing Ø (mm)	Filling volume (ml)	Connection	Specifics	PU ((pcs./box) / pal.)
A-2205	PVC	12.5	3 x 4.1	1.4	2 x fLL/mLL	LS 2 fold	150 / 8,400
A-2206	PVC	28.5	3 x 4.1	3.7	4 x fLL/mLL	LS 4 fold	100 / 5,600
A-2227	PUR	8.0	0.6 x 2.0	0.8	fLL/mLL	HR 3-fold	100 / 11,200
A-2229	PUR	33.0	3 x 4.1	3.6	fLL/ 2 x mLL	LS 2 fold	100 / 4,800
A-2230	PUR	9.0	1.0 x 2.0	1.0	fLL/mLL	HR 2-fold	200 / 9,600
A-2231	PUR	9.0	1.0 x 2.0	1.4	fLL/mLL	HR 3-fold	200 / 9,600
A-2232	PUR	12.0	1.0 x 2.0	1.7	fLL/mLL	HR 4-fold	200 / 9,600

- Can be used for the infusion of liquid drugs or solutions
- Compatible with all Luer-Lock connectors
- Can be connected to additional systems easily
- Transparent connectors / lines
- Visual drug flow control

Made in Germany

ISO 13485



## Infusion Systems



### RoweInfuSet

Art.-No.	Material (tube)	Length (cm)	Tubing Ø (mm)	Filling volume (ml)	Connection	Specifics	PU ((pcs./box) / pal.)
A-2306	PVC	180	2.5 x 4.1	10.0	fLL/mLL	Manifold-3	25 / 2,800
A-2329	PVC	180	2.5 x 4.1	10.7	fLL/mLL	Manifold-5	25 / 1,400

- Color coded cocks on triple (blue, yellow, red) and fivefold manifold (+ green, white) for secure application
- Compatible with all Luer-Lock connectors
- Simple and fast connection of patient supply line by rotating lock nut
- PSU body
- Visual drug flow control

## Infusion Systems



## RoweFil

Art.-No.	Material (tube)	Length (cm)	Tubing Ø (mm)	Filling volume (ml)	Filter	Color code	OP (bar)	PU (pcs./box) / pal.)
A-2356	PUR	10	1.5 x 2.7	2.20	0.2 µm nylon*	blue	3.2	50 / 5,600
A-2357	PUR	10	1.5 x 2.7	2.20	0.2 µm PET	light blue	3.2	50 / 5,600
A-2358	PUR	10	3.0 x 4.1	2.60	1.2 µm PET	yellow	2.5	50 / 5,600
A-2361	PUR	10	1.5 x 2.7	2.20	0.2 µm PES	-	3.2	50 / 5,600

- Integrated venting through a PTFE membrane
- Compatible with all Luer-Lock connectors
- Can be connected to additional systems easily
- Filter area 13.5 cm<sup>2</sup>
- Transparent connectors / tube / housing
- Visual drug flow control
- fLL/mLL
- MABS housing

\* positively charged nylon membrane with endotoxin retention for filtration up to 120 h

Made in Germany

ISO 13485



## Infusion Systems



### RoweFil

Art.-No.	Material (tube)	Length (cm)	Tubing Ø (mm)	Filling volume (ml)	Filter	Color code	OP (bar)	PU (pcs./box) / pal.)
A-2362	PUR	10 / 150	1.5 x 2.7	4.85	0.2 µm PES	-	3.2	240 / 3,840
A-2368	PUR	10	1.5 x 2.7	2.65	0.2 µm nylon* + Y-part + clamp + rotating lock nut IN	blue	3.2	50 / 5,600
A-2373	PUR	2 x 10	3.0 x 4.1	3.40	1.2 µm PET	yellow	2.5	50 / 2,400
A-2374	PUR	10	1.5 x 2.7	2.40	0.2 µm nylon* + check valve	blue	3.2	50 / 5,600

- Integrated venting through a PTFE membrane
- Compatible with all Luer-Lock connectors
- Can be connected to additional systems easily
- Filter area 13.5 cm<sup>2</sup>
- Transparent connectors / tube / housing
- Visual drug flow control
- fLL/mLL
- MABS body

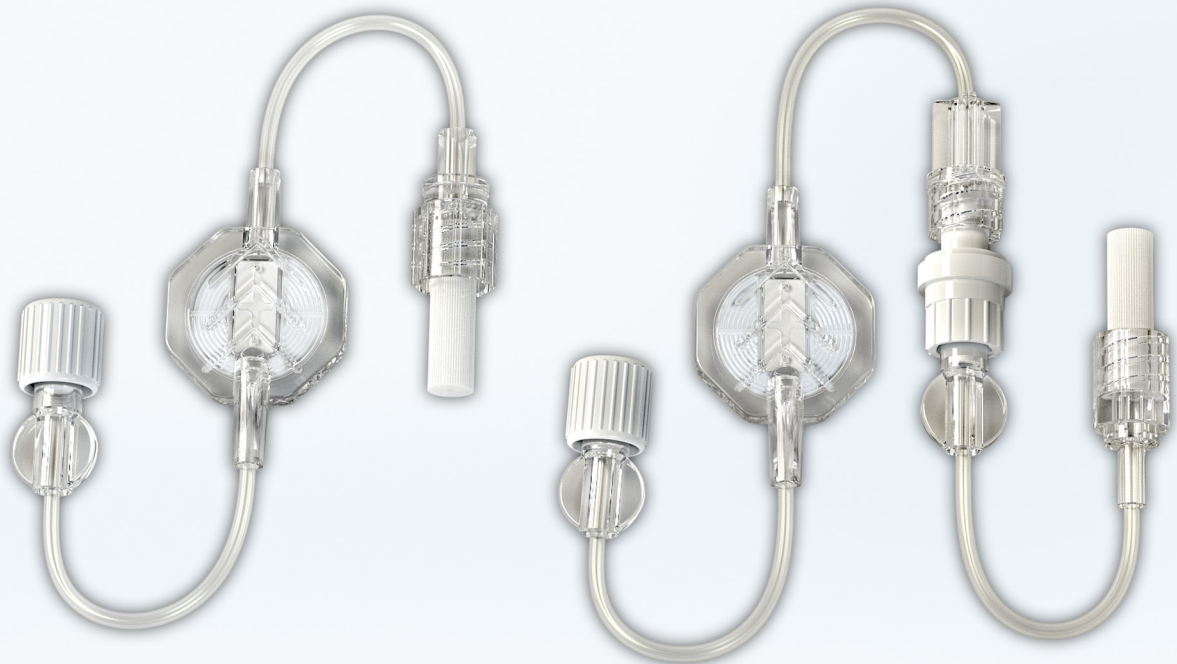
\* positively charged nylon membrane with endotoxin retention for filtration up to 120 h

Made in Germany

ISO 13485



## Infusion Systems



### RoweInfuset with RowePaed M

Art.-No.	Material (tube)	Length (cm)	Tubing Ø (mm)	Filling volume (ml)	Connection	Filter	PU ((pcs./box) / pal.)
A-2310	PUR	2 x 3	1.0 x 2.0	0.5	fLL/mL + rotating lock nut	0.2 µm nylon*	800 / 12,800
A-2369	PUR	2 x 10	1.0 x 2.0	0.6	fLL/mL	0.2 µm nylon* + slide clamp	800 / 12,800
A-2370	PUR	3 x 5	1.0 x 2.0	0.9	fLL/mL + rotating lock nut	0.2 µm nylon* + check valve	800 / 12,800
A-2372	PUR	2 x 10	1.0 x 2.0	0.6	fLL/mL	1.2 µm PET + slide clamp	800 / 12,800
A-2376	PUR	2 x 10	1.0 x 2.0	0.6	fLL / mL	1.2 µm PET + slide clamp + color code: blue	800 / 12,800

- Infusion set with paediatric filter and transparent tubings
- Integrated venting through a PTFE membrane
- Compatible with all Luer-Lock connectors
- Can be connected to additional systems easily
- Filter area 2.3 cm<sup>2</sup>
- Transparent connectors / tube / housing
- Visual drug flow control
- PC housing

\* positively charged nylon membrane with endotoxin retention

Made in Germany

ISO 13485



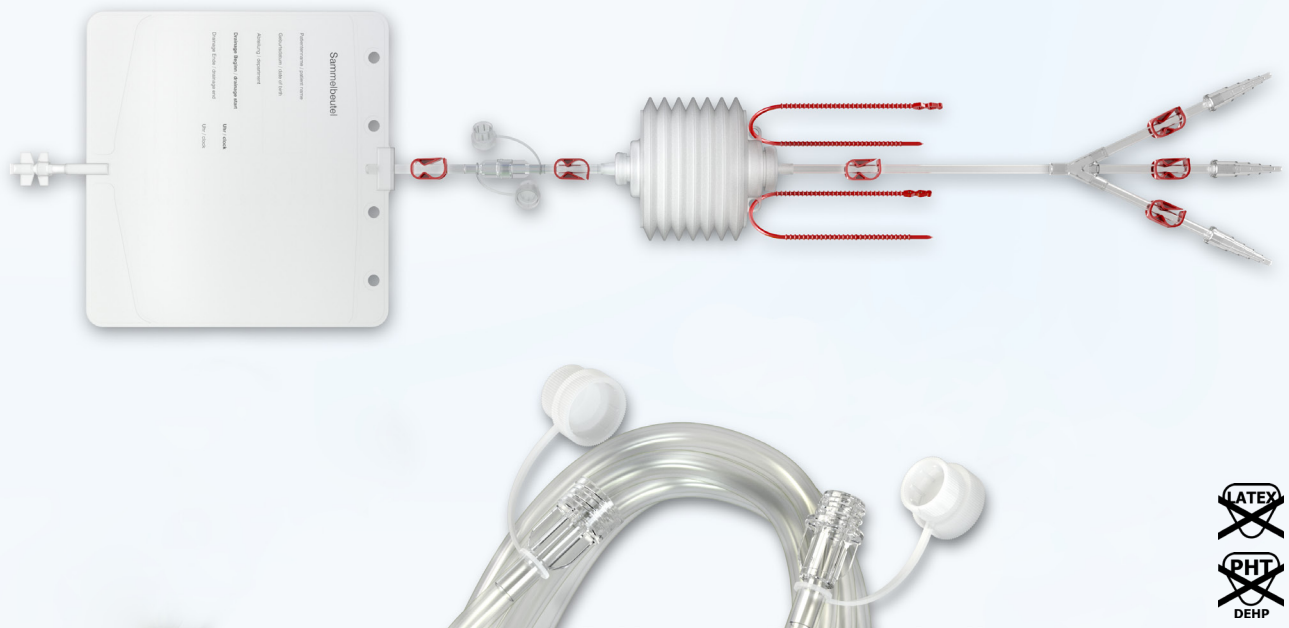


## *Transfusion Systems*



A variety of transfusion systems and blood filters from standard PVC-lines to specialized tubing and sets are available. Applications are blood filtration of particles, blood clots or the transfer of blood out of collection bags. We are specialized in realizing customized requirements such as different tubing diameters, pore size of membrane, etc.

## Transfusion Systems



### RoweTrans Transfusion System / Lines

Art.-No.	Material (tube)	Length (cm)	Tubing Ø (mm)	Filling volume (ml)	Connection	Specifics	PU ((pcs./box) / pal.)
A-3000	PVC	160	4.8 x 6.8	suction bellow: 250 collection bag: 1000	large bore male/ female	-	10 / 480
A-3002	PVC	120	4.8 x 6.8	20	large bore male/ female	Extension Line	100 / 4,800

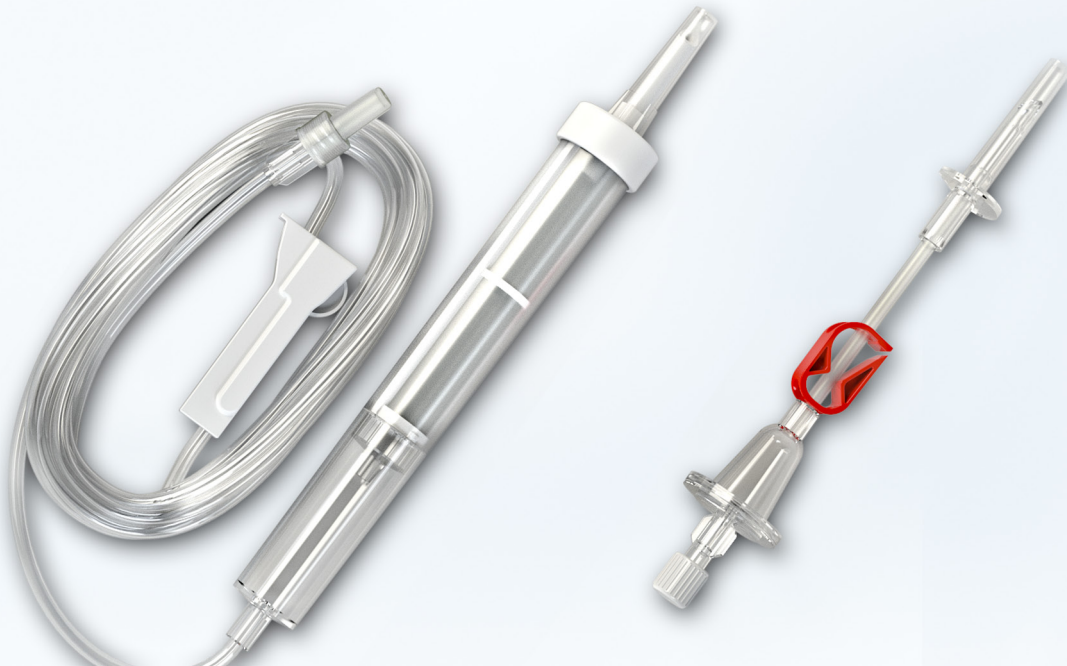
- Connection to transfer blood
- Transparent tubing and connectors for visual flow control
- Marginal technical complexity and low costs compared to auto transfusions with washing process

Made in Germany

ISO 13485



## Transfusion Systems



### RoweTrans Blood Filter

Art.-No.	Material (tube)	Length (cm)	Tubing Ø (mm)	Filling volume (ml)	Connection	Specifics	PU ((pcs./box) / pal.)
A-3100	PVC	150	3.0 x 4.1	-	Spike/mLL	Blood filter-set * Micropure 40-33 (40 µm Filter, 33 cm <sup>2</sup> )	50 / 2,400
A-3101	PVC	150	3.0 x 4.1	-	Spike/mLL	Blood filter-set * Micropure 15-33 (15 µm Filter, 33 cm <sup>2</sup> )	50 / 2,400
A-3102	PUR	75	3.0 x 4.1	6.2	Spike/fLL	Blood filter 40 µm **	50 / 2,800
A-3103	PVC	20	4.8 x 6.8	3.7	fLL/mLL	Blood filter 40 µm	50 / 2,800

- Compatible with all Luer-Lock connectors
- No follow up costs for expensive equipment
- Blood filter optional with 15 µm or 40 µm

\* with roller clamp  
\*\* with pinch clamp

Made in Germany

ISO 13485



## Transfusion Systems



### RoweTrans Blood warming lines

Art.-No.	Material (tube)	Length (cm)	Tubing Ø (mm)	Filling volume (ml)	Connection	Specifics	PU ((pcs./box) / pal.)
A-3210	PVC	350	3.0 x 4.1	24.8	fLL/mLL	with roller clamp	100 / 4,800
A-3211	PVC	460	3.0 x 4.1	32.6	fLL/mLL	with roller clamp	50 / 4,800
A-3212	PVC	460	3.0 x 4.1	32.6	fLL/mLL	-	100 / 4,800
A-3213	PVC	350	3.0 x 4.1	24.8	fLL/mLL	-	100 / 4,800
A-3214	PVC	150	3.0 x 4.1	10.8	fLL/mLL	-	100 / 4,800

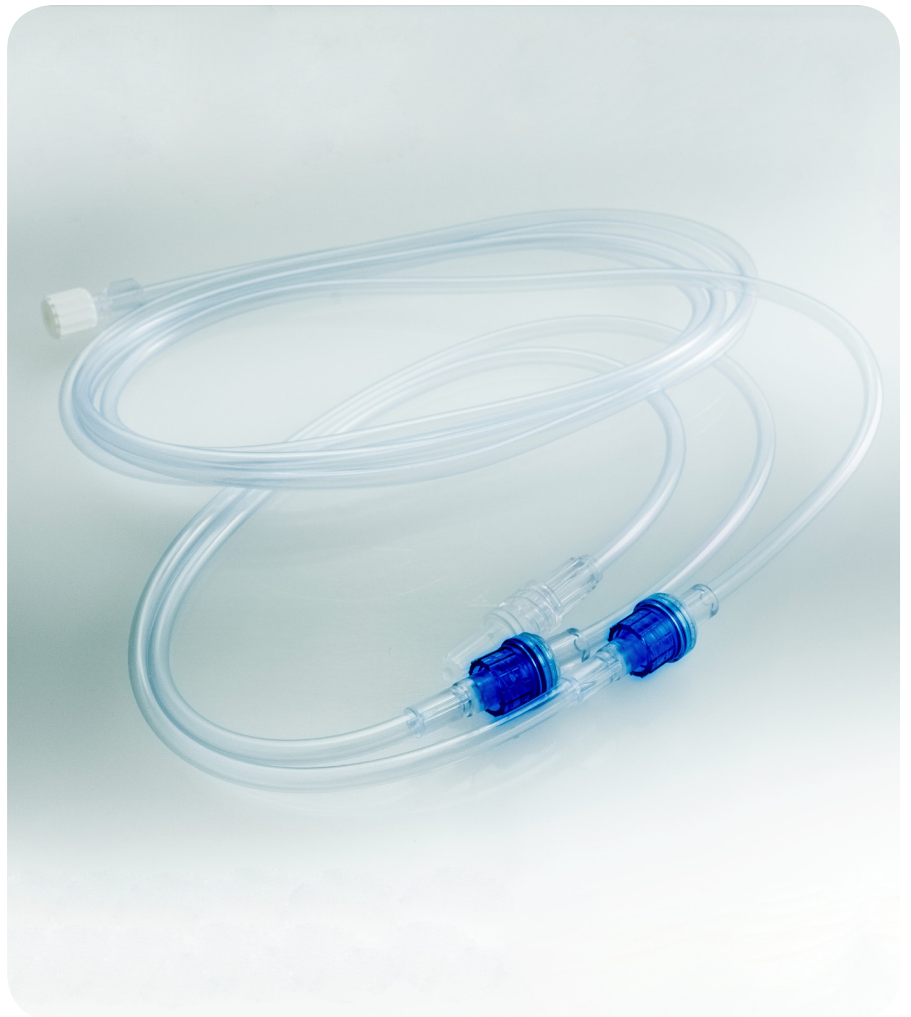
- Compatible with all Luer-Lock connectors
- Connection between the transfusion bag and the patient
- to heat up the blood in the blood heater

Made in Germany

ISO 13485



## *Tubing Systems Cardiology, Radiology*



## Tubing Systems Cardiology, Radiology



### RowePatientLines

Art.-No.	Material (tube)	Length (cm)	Tubing Ø (mm)	Specifics	Connection	PU ((pcs./box) / pal.)
A-7001	PVC	150	1.65 x 3.15	-	fLL/mLL	50 / 3,600
A-7013	PVC	250	1.65 x 3.15	-	fLL/mLL	50 / 3,600
A-7015	PVC	120	1.65 x 3.15	-	fLL/mLL	50 / 3,600
A-7018	PVC	100	1.65 x 3.15	-	fLL/mLL	50 / 3,600
A-7020	PVC	180	1.65 x 3.15	-	fLL/mLL	50 / 3,600
A-7019	PVC	250	1.65 x 3.15	check valve	fLL/mLL	50 / 3,600
A-7022	PVC	25	1.65 x 3.15	check valve	fLL/mLL	100 / 7,200
A-7023	PVC	210	1.65 x 3.15	check valve	fLL/mLL	50 / 3,600
A-7024	PVC	180	1.65 x 3.15	check valve	fLL/mLL	50 / 3,600

- Compatible with all Luer-Lock connectors
- Pressure resistance up to 21 bar (305 psi)
- Transparent tubing for visual flow control
- Customized systems are available

Made in Germany

ISO 13485



## Tubing Systems Cardiology, Radiology



### RoweSpiralLines

Art.-No.	Material (tube)	Length (cm)	Tubing Ø (mm)	Specifics	Connection	PU ((pcs./box) / pal.)
A-7003	PVC	150	1.65 x 3.15	-	fLL/mLL	50 / 3,600
A-7009	PVC	180	1.65 x 3.15	-	fLL/mLL	50 / 3,600
A-7021	PVC	180	1.65 x 3.15	check valve, Y-connector	fLL/mLL	50 / 3,600
A-7039	PVC	150	1.65 x 3.15	check valve, Y-connector	fLL/mLL	50 / 3,600
A-7040	PVC	210	1.65 x 3.15	check valve, Y-connector	fLL/mLL	50 / 3,600
A-7041	PVC	210	1.65 x 3.15	-	fLL/mLL	50 / 3,600

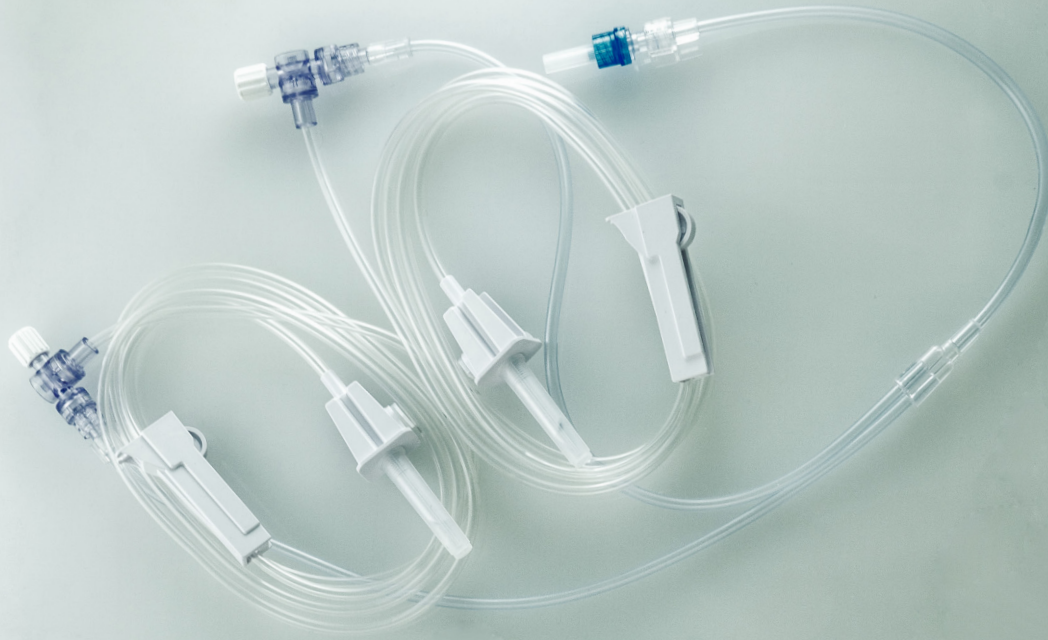
- Compatible with all Luer-Lock connectors
- Pressure resistance up to 21 bar (305 psi)
- Transparent tubing and connectors for visual flow control
- Customized systems are available

Made in Germany

ISO 13485



## Tubing Systems Cardiology, Radiology



### RoweTransfer-Sets

Art.-No.	Material (tube)	Length (cm)	Tubing Ø (mm)	Specifics	Connection	PU ((pcs./box) / pal.)
A-7031	PVC	-	3.00 x 4.10 2.50 x 4.10	Tip: Spike check valve	fLL/mLL	50 / 3,600
A-7032	PVC	-	1.65 x 3.15	2 x check valve Y-connector SpiralLine 200 cm	fLL/mLL	50 / 3,600

- Compatible with all Luer-Lock connectors
- Pressure resistance up to 21 bar (305 psi)
- Transparent tubing for visual flow control
- Customized systems are available

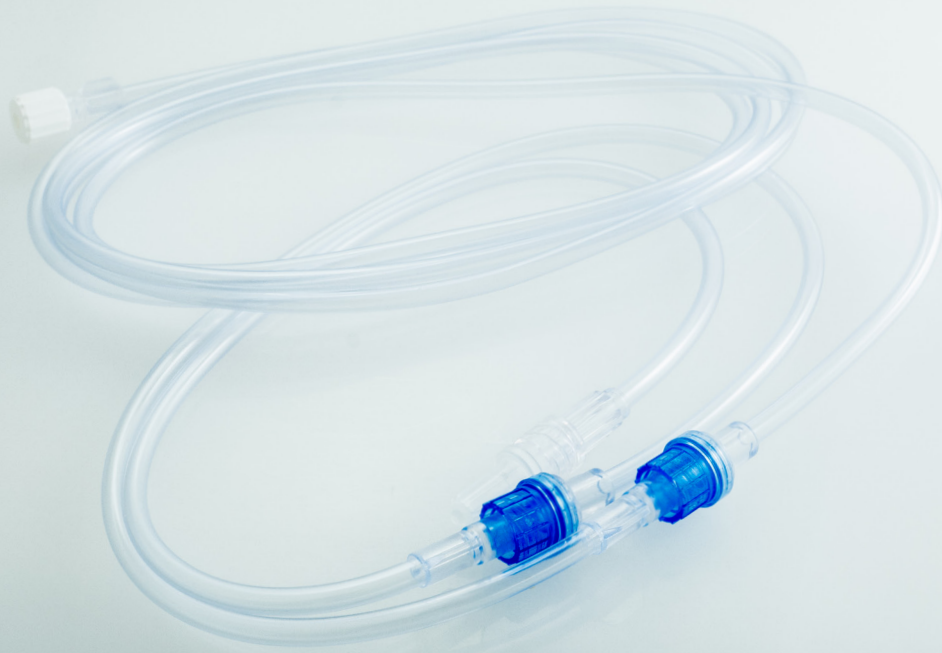
Made in Germany

ISO 13485





## Tubing Systems Cardiology, Radiology



### RowePressureLines - Customized systems

Art.-No.	Title	Material	Tubing Ø (mm)	Specifics	Connection	PU ((pcs./box) / pal.)
A-7029	PVC	250 (180 / 40 / 30)	2.50 x 4.10	2 x check valve	fLL/mLL	50/ 3,600
A-7033	PVC	320 (250 / 40 / 30)	2.50 x 4.10	2 x check valve	fLL/mLL	50/ 3,600

- Compatible with all Luer-Lock connectors
- Pressure resistance up to 21 bar (305 psi)
- Transparent tubing and connectors for visual flow control
- Customized systems are available

Made in Germany

ISO 13485



## Spikes



Spikes for withdrawal and administration of drugs. Spikes with hydrophobic ventilation filter for the repeated withdrawal of solutions out of medical vials. Different variants with 5  $\mu\text{m}$  hydrophobic particle filter, safety valve or cannula available. Other customized solutions on request.

## Spikes



### RoweSpike I

Art.-No.	Material (body)	Filling volume (ml)	Connection	Hydrophilic filter	Cap	PU ((pcs./box) / pal.)
A-6400	ABS - w	0.25	fLL	-	green	300 / 16,800
A-6401	ABS - w	0.25	fLL	5 µm	blue	300 / 16,800
A-6402	MABS - t	0.25	fLL	5 µm, chemo	red	150 / 16,800

- For repeated withdrawal of solutions, drugs and toxic substances and ventilation of vials and containers
- Safety snap cap for simple one-hand handling and protection against contamination
- Low priming volume
- Low piercing forces
- Option: with safety valve
- Easy handling due to ergonomic design
- Ventilation filter 0.1 µm PTFE membrane (hydrophobic bacteria filter)

w = white  
t = transparent

Made in Germany

ISO 13485



## Spikes



### RoweSpike I eco

Art.-No.	Material (body)	Filling volume (ml)	Connection	Tip	Hydrophilic filter	Cap	PU ((pcs./box) / pal.)
A-6407	ABS - w	0.22	fLL	Spike	-	green	300 / 16,800
A-6408	ABS - w	0.22	fLL	Spike	5 µm	blue	300 / 16,800
A-6409	MABS - t	0.22	fLL	Spike	5 µm, chemo	red	150 / 16,800

- For repeated withdrawal of solutions, drugs and toxic substances and ventilation of vials and containers
- Safety snap cap for simple one-hand handling and protection against contamination
- Easy handling due to ergonomic design
- Low priming volume
- Low piercing forces
- Ventilation filter 0.1 µm PTFE membrane (hydrophobic bacteria filter)

w = white  
t = transparent

Prolonged fluid opening ensures a nearly complete emptying of the vials

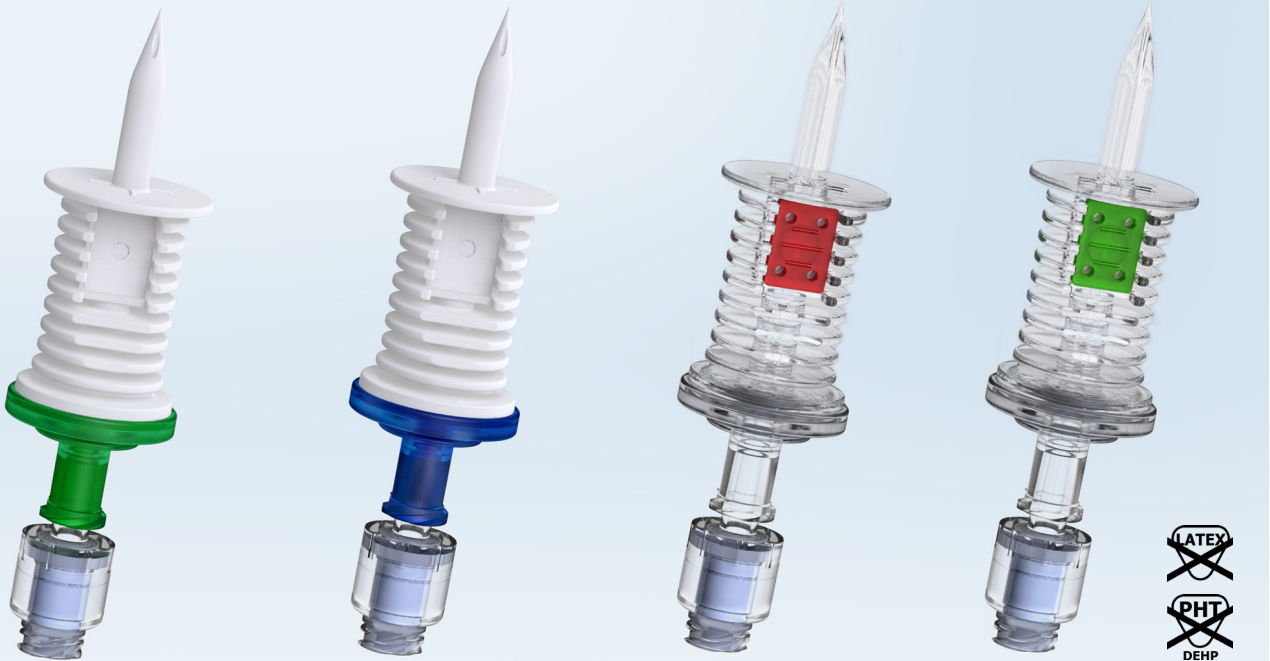


Made in Germany

ISO 13485



## Spikes



### RoweSpike I eco SV

Art.-No.	Material (body)	Filling volume (ml)	Connection	Tip	Hydrophilic filter	Specifics	PU ((pcs./box) / pal.)
A-6413	ABS - w	0.25	fLL	Spike	-	Safety Valve, green	300 / 16,800
A-6414	ABS - w	0.25	fLL	Spike	5 µm	Safety Valve, blue	300 / 16,800
A-6415	MABS - t	0.25	fLL	Spike	5 µm, chemo	Safety Valve, red	150 / 16,800
A-6416	MABS - t	0.25	fLL	Spike	chemo, free flow	Safety Valve, green	150 / 16,800

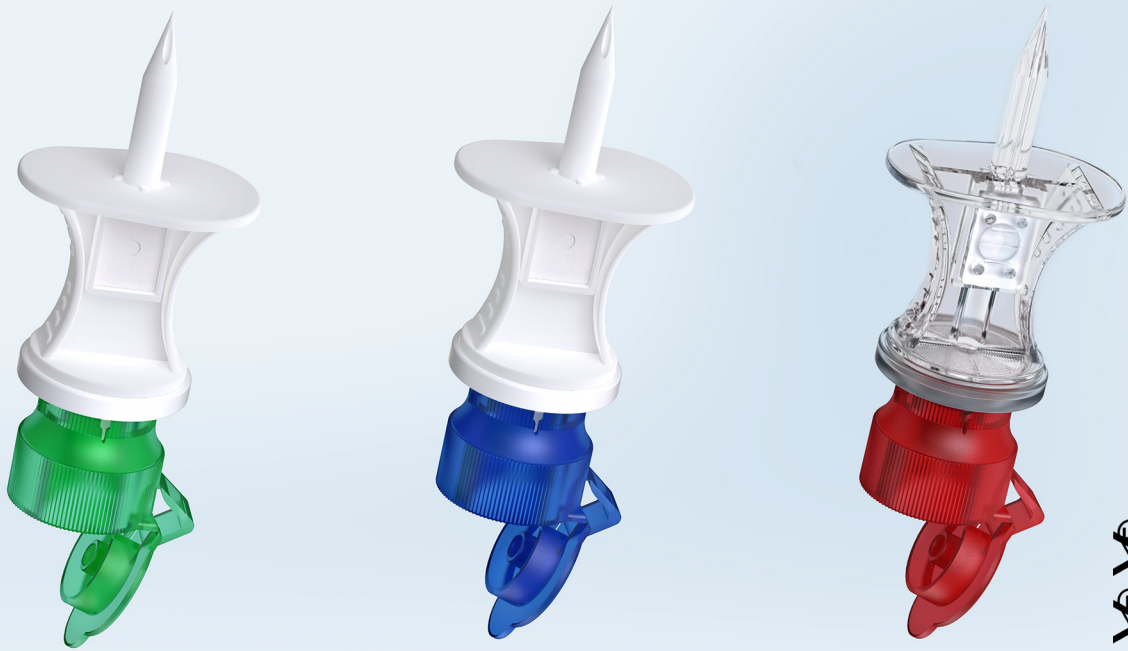
- For repeated withdrawal of solutions, drugs and toxic substances and ventilation of vials and containers
- Simple one-hand handling of safety snap cap
- Protection against contamination through safety snap cap
- Easy handling due to ergonomic design
- Low priming volume
- Low piercing forces
- Ventilation filter 0.1 µm PTFE membrane (hydrophobic bacteria filter)

w = white  
t = transparent

Prolonged fluid opening ensures a nearly complete emptying of the vials



## Spikes



### RoweSpike II

Art.-No.	Material (body)	Filling volume (ml)	Connection	Tip	Hydrophilic filter	Cap	PU ((pcs./box) / pal.)
A-6425	ABS - w	0.25	fLL	Spike	-	green	300 / 16,800
A-6426	ABS - w	0.25	fLL	Spike	5 µm	blue	300 / 16,800
A-6427	MABS - t	0.25	fLL	Spike	5 µm, chemo	red	150 / 16,800
A-6432	MABS - t	0.25	fLL	Spike	chemo, free flow	green	150 / 16,800

- For repeated withdrawal and aspiration of solutions, drugs and toxic substances
- Safety snap cap for simple one-hand handling and protection against contamination
- Easy handling due to ergonomic design
- Low priming volume
- Low piercing forces
- Ventilation filter 0.1 µm PTFE membrane (hydrophobic bacteria filter)

w = white  
t = transparent

Made in Germany

ISO 13485



## Spikes



### RoweSpike II MK

Art.-No.	Material (body)	Filling volume (ml)	Connection	Tip	Hydrophilic filter	Cap	PU ((pcs./box) / pal.)
A-6430	ABS - w	0.25	fLL	Metal cannula	5 µm	blue	300 / 16,800
A-6431	MABS - t	0.25	fLL	Metal cannula	5 µm, chemo	red	150 / 16,800

- For repeated withdrawal of solutions, drugs and toxic substances and ventilation of vials and containers
- Simple one-hand handling of safety snap cap
- Protection against contamination through safety snap cap
- Low priming volume
- Low piercing forces
- Easy handling due to ergonomic design
- Ventilation filter 0.1 µm PTFE membrane (hydrophobic bacteria filter)

w = white  
t = transparent

## Spikes



### RoweSpike II SV

Art.-No.	Material (body)	Filling volume (ml)	Connection	Tip	Hydrophilic filter	Specifics	PU ((pcs./box) / pal.)
A-6434	MABS - t	0.25	fLL	Spike	chemo, free flow	Safety Valve, green	150 / 16,800
A-6440	MABS - t	0.25	fLL	Spike	5 µm, chemo, eco	Safety Valve, red	150 / 16,800
A-6442	MABS - t	0.25	fLL	Spike	5 µm, chemo	Safety Valve, red	150 / 16,800
A-6443	ABS - w	0.25	fLL	Spike	eco	Safety Valve, green	300 / 16,800
A-6445	ABS - w	0.25	fLL	Spike	-	Safety Valve, green	300 / 16,800
A-6446	ABS - w	0.25	fLL	Spike	5 µm, eco	Safety Valve, blue	300 / 16,800
A-6448	ABS - w	0.25	fLL	Spike	5 µm	Safety Valve, blue	300 / 16,800

- For repeated withdrawal of solutions, drugs and toxic substances and ventilation of vials and containers
- Easy handling due to ergonomic design
- Low priming volume
- Low piercing forces
- Ventilation filter 0.1 µm PTFE membrane (hydrophobic bacteria filter)

w = white  
t = transparent

Made in Germany

ISO 13485





## Spikes



### RoweSpike II SV MK

Art.-No.	Material (body)	Filling volume (ml)	Connection	Tip	Hydrophilic filter	Specifics	PU ((pcs./box) / pal.)
A-6441	MABS - t	0.25	fLL	Metal cannula	5 µm, chemo	Safety Valve, red	150 / 16,800
A-6433	MABS - t	0.25	fLL	Metal cannula	chemo, free flow	Safety Valve, green	150 / 16,800
A-6447	ABS - w	0.25	fLL	Metal cannula	5 µm	Safety Valve, blue	300 / 16,800

- For repeated withdrawal of solutions, drugs and toxic substances and ventilation of vials and containers
- Easy handling due to ergonomic design
- Low priming volume
- Low piercing forces
- Different membrane types
- Ventilation filter 0.1 µm PTFE membrane (hydrophobic bacteria filter)

w = white  
t = transparent

## Spikes



### RoweSpike II eco

Art.-No.	Material (body)	Filling volume (ml)	Connection	Tip	Hydrophilic filter	Cap	PU ((pcs./box) / pal.)
A-6453	ABS - w	0.25	fLL	Spike	-	green	300 / 16,800
A-6454	ABS - w	0.25	fLL	Spike	5 µm	blue	300 / 16,800
A-6455	MABS - t	0.25	fLL	Spike	5 µm, chemo	red	150 / 16,800
A-6458	MABS - t	0.25	fLL	Spike	chemo, free flow	green	150 / 16,800

Made in Germany

ISO 13485



- For repeated withdrawal of solutions, drugs and toxic substances and ventilation of vials and containers
- Safety snap cap for simple one-hand handling and protection against contamination
- Easy handling due to ergonomic design
- Low priming volume
- Low piercing forces
- Ventilation filter 0.1 µm PTFE membrane (hydrophobic bacteria filter)

w = white  
t = transparent

Prolonged fluid opening ensures a nearly complete emptying of the vials



## Spikes



### RoweSpike II Micro

Art.-No.	Material (body)	Filling volume (ml)	Connection	Tip	Hydrophilic filter	Specifics	PU ((pcs./box) / pal.)
A-6436	ABS - w	0.20	fLL	Metal cannula	5 µm	Blue	300 / 16,800
A-6437	MABS - t	0.20	fLL	Metal cannula	5 µm, chemo	Red	150 / 16,800
A-6444	ABS - w	0.25	fLL	Metal cannula	5 µm	Safety Valve, trans.	300 / 16,800
A-6449	MABS - t	0.25	fLL	Metal cannula	5 µm, chemo	Safety Valve, red	150 / 16,800

- For repeated withdrawal of solutions, drugs and toxic substances and ventilation of vials and containers
- Easy handling due to ergonomic design
- Low priming volume
- Low piercing forces
- Ventilation filter 0.1 µm PTFE membrane (hydrophobic bacteria filter)

w = white

t = transparent

## Spikes



### RoweSpike VI SnapFit

Art.-No.	Material (body)	Filling volume (ml)	Connection	Tip	Hydrophilic filter	Specifics	PU ((pcs./box) / pal.)
A-6472	MABS	0.13	fLL	Spike	-	green cap	150 / 16,800
A-6473	MABS	0.20	fLL	Spike	-	Safety Valve	150 / 16,800
A-6485	MABS	0.25	fLL	Spike	5 µm, chemo	red cap	150 / 16,800
A-6486	MABS	0.25	fLL	Spike	5 µm, chemo	Safety Valve, red frame	150 / 16,800
A-6492	MABS	0.2	fLL	Cannula	-	green cap	50 / 5,600

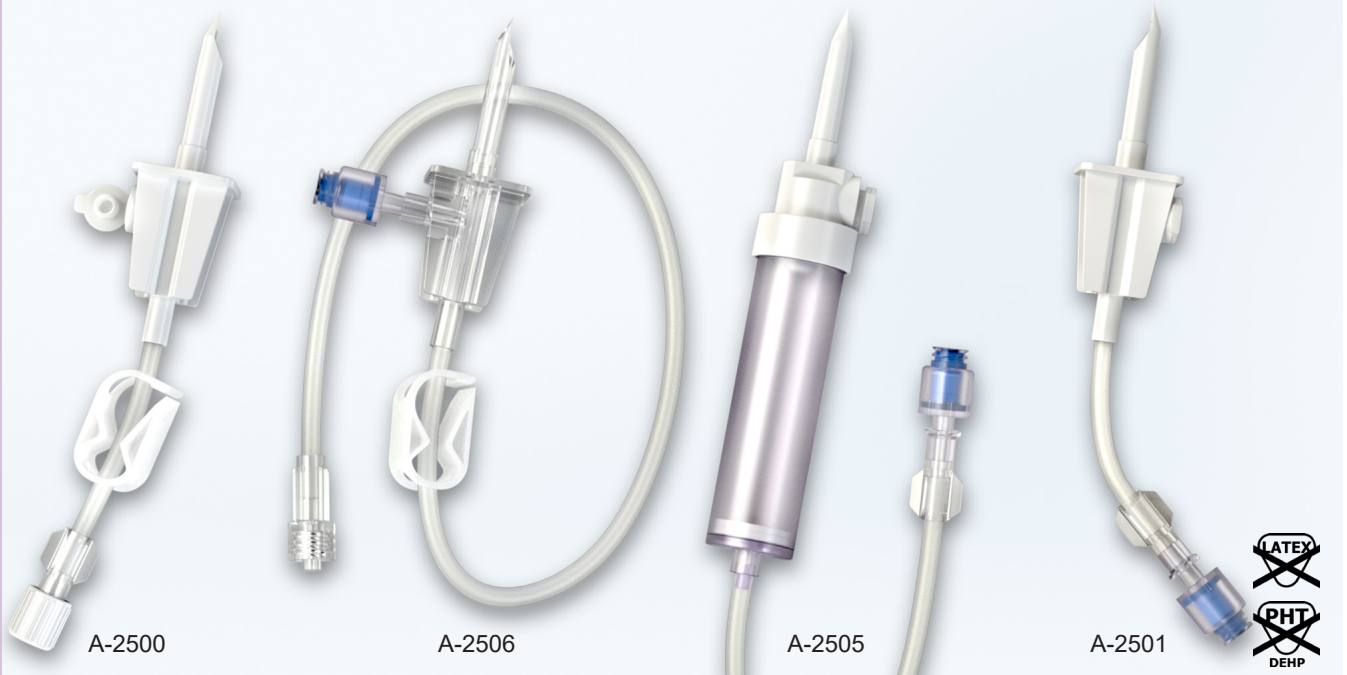
- For repeated withdrawal of solutions, drugs and toxic substances and ventilation of vials and containers
- Safety snap cap for simple one-hand handling
- Easy handling due to ergonomic design
- Protection against contamination through safety valve (SV)
- Low priming volume
- Low piercing forces
- Ventilation filter 0.1 µm PTFE membrane (hydrophobic bacteria filter)
- Safe vial connection for 20 mm & 32 mm (A-6492) bottle cap
- Prolonged fluid opening ensures a nearly complete emptying of the vials

Made in Germany

ISO 13485



## Spikes



## RoweBagSpike

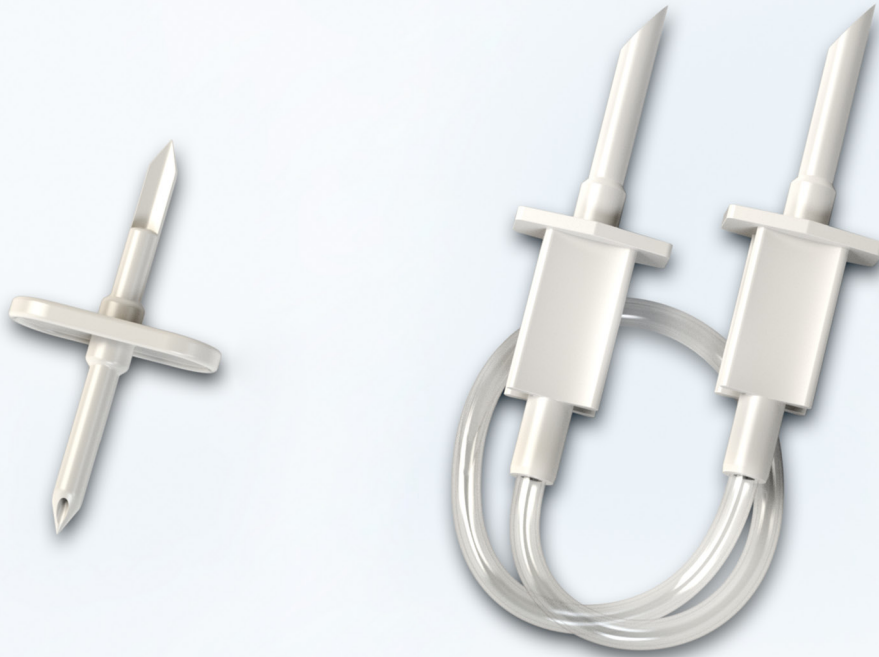
Art.-No.	Length (cm)	Tubing Ø (mm)	Material	Filling volume (ml)	Connection	Hydrophobic filter	Specifics	PU ((pcs./box) / pal.)
A-2500	6	3.0 x 4.1	PUR	0.9	fLL	1.2 µm	Pinch clamp	100 / 11,200
A-2501	6	3.0 x 4.1	PUR	0.9	fLL	1.2 µm	Safety Valve	100 / 11,200
A-2502	6	3.0 x 4.1	PVC	0.9	fLL	1.2 µm	Pinch clamp	100 / 11,200
A-2504	-	-	ABS / PE hydrophobic membrane	0.55	fLL	1.2 µm	Safety Valve	100 / 11,200
A-2505	4	3.0 x 4.1	PUR	0.3*	fLL	-	Safety Valve, drip chamber	50 / 5,600
A-2506	30	3.0 x 4.1	PVC	2.3	mLL	-	Safety Valve	50 / 5,600
A-2507	10	4.8 x 6.8	PVC	2.0	twist-off port	-	Pinch clamp	50 / 5,600

- For repeated withdrawal and aspiration of solutions or drugs out of all conventional medical bags
- High security and maximum protection against contamination due to closed system

- Good priming characteristics

\* tube only

## Spikes



### RoweTransferSpike / RoweTransferSet

Art.-No.	Material body / tube	Length (mm)	Tubing Ø (mm)	Filling volume (ml)	Connection	PU ((pcs./box) / pal.)
A-3305	ABS / PVC	20	3.0 x 4.1	~ 2	Spike	200 / 9,600
A-10038	ABS	~ 83,5 *	-	-	Spike	500 / 24,000

- TransferSpike / TransferSet can be used to decant and / or to mix sterile liquids in closed systems
- For rubber stoppers and bag set ports
- Provides secure connection of two vials
- Large internal diameter
- Good handling

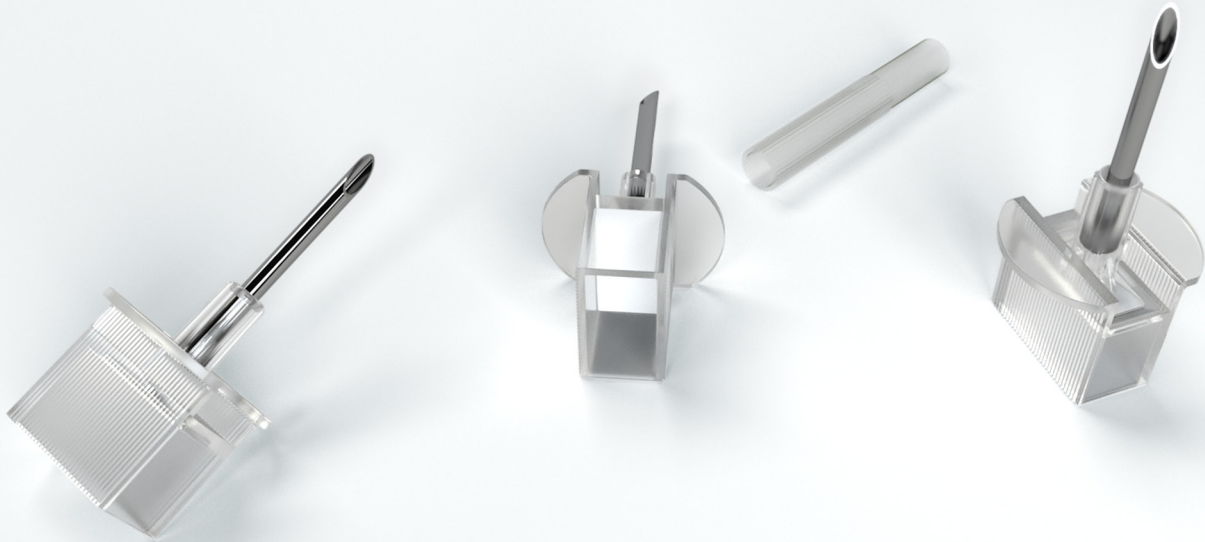
\* TransferSet incl. protection caps

Made in Germany

ISO 13485



## Spikes



## RowePhobCan

Art.-No.	Material (body)	Gauge	Length cannula (mm)	Filter	PU ((pcs./box) / pal.)
A-1951	MABS	14	20	3 µm PTFE	500 / 24,000

- Hydrophobic ventilation cannula for canister for safe retention of fluids, particles, bacteria and critical aerosols > 3 µm
- Low priming volume
- Good grip
- High airflow – good ventilation

## *Hydrophilic & Hydrophobic Filters*



Hydrophilic filters for the filtration of solutions with different membranes and different pore sizes. Hydrophobic filters for air ventilation and for retention of liquids, particles and microorganisms  $> 0.1 \mu\text{m}$ .



## Hydrophilic & Hydrophobic Filters



### RowePhob 18 / 25

Art.-No.	Material (body)	Connection	Filter Ø (mm)	Filter	PU ((pcs./box) / pal.)
A-6250	MABS	fLL/mL	18	0.1 µm PTFE	1,000 / 16,000
A-6275	MABS	fLL/mLL	18	0.1 µm PTFE	1,000 / 16,000
A-6350	MABS	fLL/mL	25	0.1 µm PTFE	1,000 / 16,000
A-6375	MABS	fLL/mLL	25	0.1 µm PTFE	1,000 / 16,000

- Hydrophobic ventilation filter for safe retention of fluids, particles, bacteria and critically aerosols > 0.1µm
- Compatible with all Luer-Lock connectors
- Good grip
- Different connectors
- Good ventilation

## Hydrophilic & Hydrophobic Filters



### RowePhil 18

Art.-No.	Material (body)	Filling volume (ml)	Connection	Filter	PU ((pcs./box) / pal.)
A-6225	MABS	0.2	fLL/mLL	0.2 µm nylon*	1,000 / 16,000
A-6226	MABS	0.2	fLL/mLL	1.2 µm PET	1,000 / 16,000
A-6227	MABS	0.2	fLL/mLL	5.0 µm PET	1,000 / 16,000
A-6231	MABS	0.2	fLL/mLL	5.0 µm PES	1,000 / 16,000
A-6232	MABS	0.2	fLL/mLL	0.2 µm PES	1,000 / 16,000
A-6233	MABS	0.2	fLL/mLL	0.2 µm PET	1,000 / 16,000

- Hydrophilic injection filter for protection against particle and bacterial contamination of small amounts of drugs during administration
- Compatible with all Luer-Lock connectors
- Low priming volume
- Different connectors are available
- Filter area 2.3 cm<sup>2</sup>

\* positively charged nylon membrane with endotoxin retention

Made in Germany

ISO 13485



## Hydrophilic & Hydrophobic Filters



### RowePhil 18

Art.-No.	Material (body)	Filling volume (ml)	Connection	Filter	PU ((pcs./box) / pal.)
A-6200	MABS	0.2	fLL/mL	0.2 µm nylon*	1,000 / 16,000
A-6201	MABS	0.2	fLL/mL	1.2 µm PET	1,000 / 16,000
A-6202	MABS	0.2	fLL/mL	5.0 µm PET	1,000 / 16,000
A-6203	MABS	0.2	fLL/mL	0.2 µm PET	1,000 / 16,000
A-6204	MABS	0.2	fLL/mL	0.2 µm PES	1,000 / 16,000
A-6205	MABS	0.2	fLL/mL	5.0 µm PES	1,000 / 16,000

- Hydrophilic injection filter for protection against particle and bacterial contamination of small amounts of drugs during administration
- Compatible with all Luer-Lock connectors
- Low priming volume
- Different connectors are available
- Filter diameter 18 mm
- Filter area 2.3 cm<sup>2</sup>

\* positively charged nylon membrane with endotoxin retention

Made in Germany

ISO 13485



## Hydrophilic & Hydrophobic Filters



### RowePhil 25

Art.-No.	Material (body)	Filling volume (ml)	Connection	Filter	PU ((pcs./box) / pal.)
A-6325	MABS	0.6	fLL/mLL	0.2 µm nylon*	1,000 / 16,000
A-6326	MABS	0.6	fLL/mLL	1.2 µm PET	1,000 / 16,000
A-6327	MABS	0.6	fLL/mLL	5.0 µm PET	1,000 / 16,000
A-6331	MABS	0.6	fLL/mLL	5.0 µm PES	1,000 / 16,000
A-6332	MABS	0.6	fLL/mLL	0.2 µm PES	1,000 / 16,000
A-6333	MABS	0.6	fLL/mLL	0.2 µm PET	1,000 / 16,000

- Hydrophilic injection filter for protection against particle and bacterial contamination of small amounts of drugs during administration
- Compatible with all Luer-Lock connectors
- Low priming volume
- Filter diameter 25 mm
- Filter area 4.0 cm<sup>2</sup>

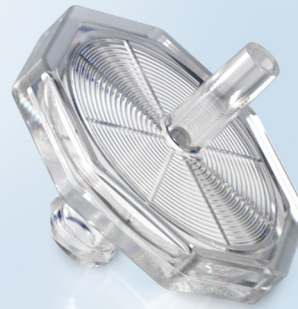
\* positively charged nylon membrane with endotoxin retention

Made in Germany

ISO 13485



## Hydrophilic & Hydrophobic Filters



### RowePhil 25

Art.-No.	Material (body)	Filling volume (ml)	Connection	Filter	PU ((pcs./box) / pal.)
A-6300	MABS	0.6	fLL/mL	0.2 µm nylon*	1,000 / 16,000
A-6301	MABS	0.6	fLL/mL	1.2 µm PET	1,000 / 16,000
A-6302	MABS	0.6	fLL/mL	5.0 µm PET	1,000 / 16,000
A-6303	MABS	0.6	fLL/mL	0.2 µm PET	1,000 / 16,000
A-6305	MABS	0.6	fLL/mL	0.2 µm PES	1,000 / 16,000
A-6306	MABS	0.6	fLL/mL	5.0 µm PES	1,000 / 16,000

- Hydrophilic injection filter for protection against particle and bacterial contamination of small amounts of drugs during administration
- Compatible with all Luer-Lock connectors
- Low priming volume
- Filter diameter 25 mm
- Filter area 4.0 cm<sup>2</sup>

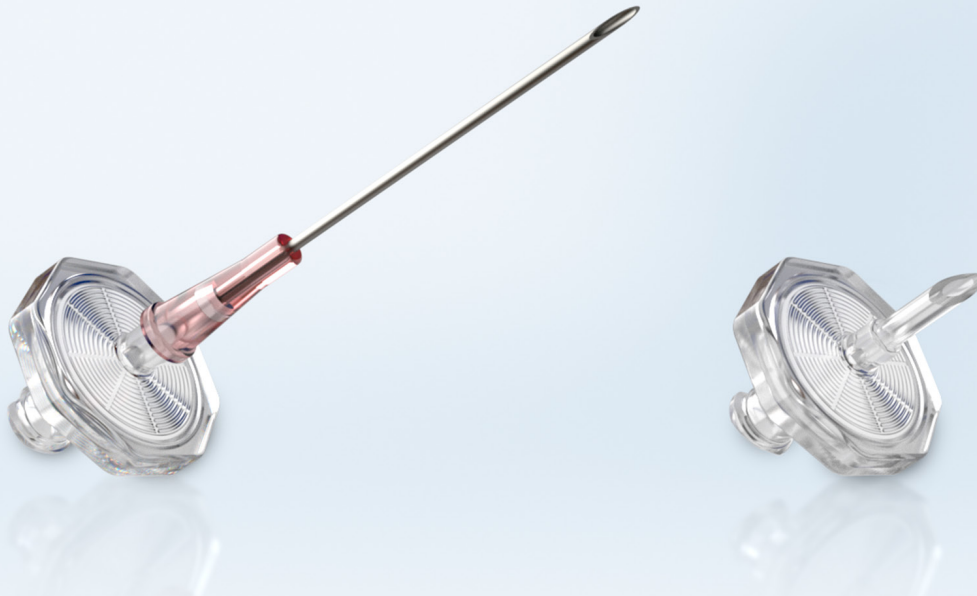
\* positively charged nylon membrane with endotoxin retention

Made in Germany

ISO 13485



## Hydrophilic & Hydrophobic Filters



### RowePhil / Phob Spike

Art.-No.	Material (body)	Filling volume (ml)	Connection	Filter	PU ((pcs./box) / pal.)
A-6230	MABS	0.2	fLL/Spike	5.0 µm PET (hydrophil)	1,000 / 16,000
A-6276 *	MABS	0.2	fLL/Cannula 18 G	0.1 µm PTFE (hydrophob)	1,000 / 16,000
A-6284	MABS	0.2	fLL/Cannula 18 G	5.0 µm PET (hydrophil)	1,000 / 16,000
A-6376 *	MABS	0.6	fLL/Cannula 18 G	0.1 µm PTFE (hydrophob)	1,000 / 16,000

- Hydrophilic injection filter for protection against particle contamination of small amounts of drugs
- Low priming volume

\* hydrophobic ventilation filter

Made in Germany

ISO 13485



## Hydrophilic & Hydrophobic Filters



A-2392



A-2391



A-2390



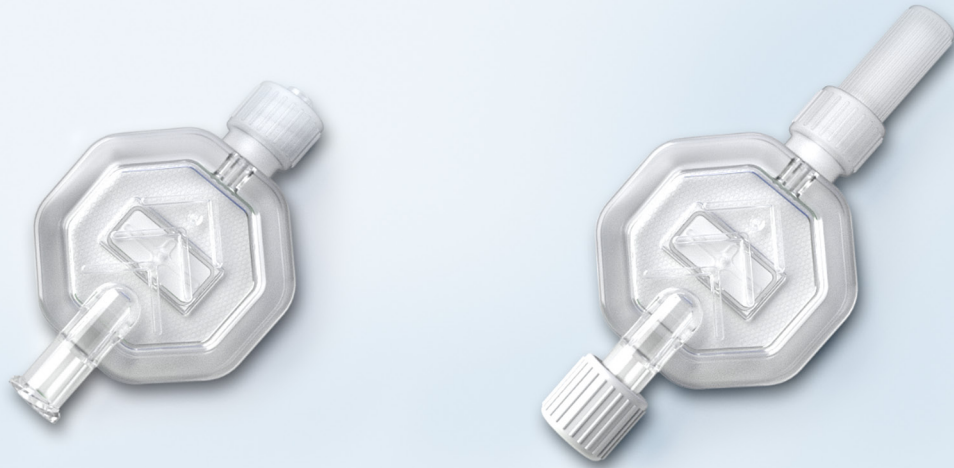
### RowePhil 3

Art.-No.	Length (cm)	Tubing Ø (mm)	Filling volume (ml)	Connection	Filter	Tube material	Specifics	PU ((pcs./box) / pal.)
A-1312	10	1.5 x 2.7	~ 0.11	fLL	-	PUR	Withdrawal Straw	1,000 / 16,000
A-2390 *	10	1.5 x 2.7	0.25	fLL	5 µm PET	PUR	Filter Straw	1,000 / 16,000
A-2391 *	4.5	1.5 x 2.7	0.13	fLL	5 µm PET	PUR	Filter Straw	1,000 / 16,000
A-2392 *	-	-	-	fLL/mL	5 µm PET	-	Filter	on request

- Filter Straw for withdrawal and filtration of solutions and drugs from glass ampules
- Compatible with all Luer-Lock connectors
- Visual flow control
- Needle free withdrawal
- Flexible plastic straw
- Customized systems are available
- MABS housing
- Filter diameter 3 mm

\* reduces risk of contamination with glass particles

## Hydrophilic & Hydrophobic Filters



### RowePaed

Art.-No.	Material (body)	Filling volume (ml)	Connection	Filter	PU ((pcs./box) / pal.)
A-6600	MABS	0.7	fLL/mLL	0.2 µm nylon*	1,000 / 16,000
A-6601	MABS	0.7	fLL/mLL	1.2 µm PET	1,000 / 16,000
A-6602	MABS	0.7	fLL/mLL	0.2 µm PET	1,000 / 16,000
A-6606	MABS	0.7	fLL/mLL	0.2 µm PES	1,000 / 16,000

- Especially for paediatrics
- Integrated venting through a PTFE membrane
- Compatible with all Luer-Lock connectors
- Can be connected to additional systems easily
- Visual drug flow control
- Rotating lock nut
- Filter area 4 cm<sup>2</sup>

\* positively charged nylon membrane with endotoxin retention

Made in Germany

ISO 13485





## Hydrophilic & Hydrophobic Filters



### RoweEpiflow

Art.-No.	Material (body)	Filling volume (ml)	Connection	Filter	PU ((pcs./box) / pal.)
A-6700	MABS	0.7	fLL/mLL	0.2 µm Nylon *	1,000 / 16,000
A-6702	MABS	0.7	fLL/mLL	0.2 µm PET	1,000 / 16,000
A-6704	PC	0.7	fLL/mLL	0.2 µm PET	1,000 / 16,000
A-6706	PC	0.7	fLL/mLL	0.2 µm Nylon *	1,000 / 16,000
A-6707	PC	0.7	fLL/mLL	0.2µm PES	1,000 / 16,000

- For epidural anaesthesia
- Compatible with all Luer-Lock connectors
- Can be connected to additional systems easily
- Visual drug flow control
- Rotating lock nut
- Without venting system

\* positively charged

Made in Germany

ISO 13485



## Hydrophilic & Hydrophobic Filters



### RoweEpiflow Neuraxial

Art.-No.	Material (body)	Filling volume (ml)	Connection	Filter	PU ((pcs./box) / pal.)
A-6750	PC	0.4	female / male	0.2 µm PET	1,000 / 16,000
A-6751	PC	0.4	female / male	0.2 µm Nylon *	1,000 / 16,000
A-6752	PC	0.4	female / male	0.2 µm PES	1,000 / 16,000

- According to new standard DIN EN ISO 80369 part 6: „Connectors for neuraxial applications“
- 20% smaller than Luer connections
- Prevents risk of misconnections
- Visual drug flow control
- For epidural and neuraxial anaesthesia
- Male connector with rotating lock nut (yellow color coding)
- Without venting membrane

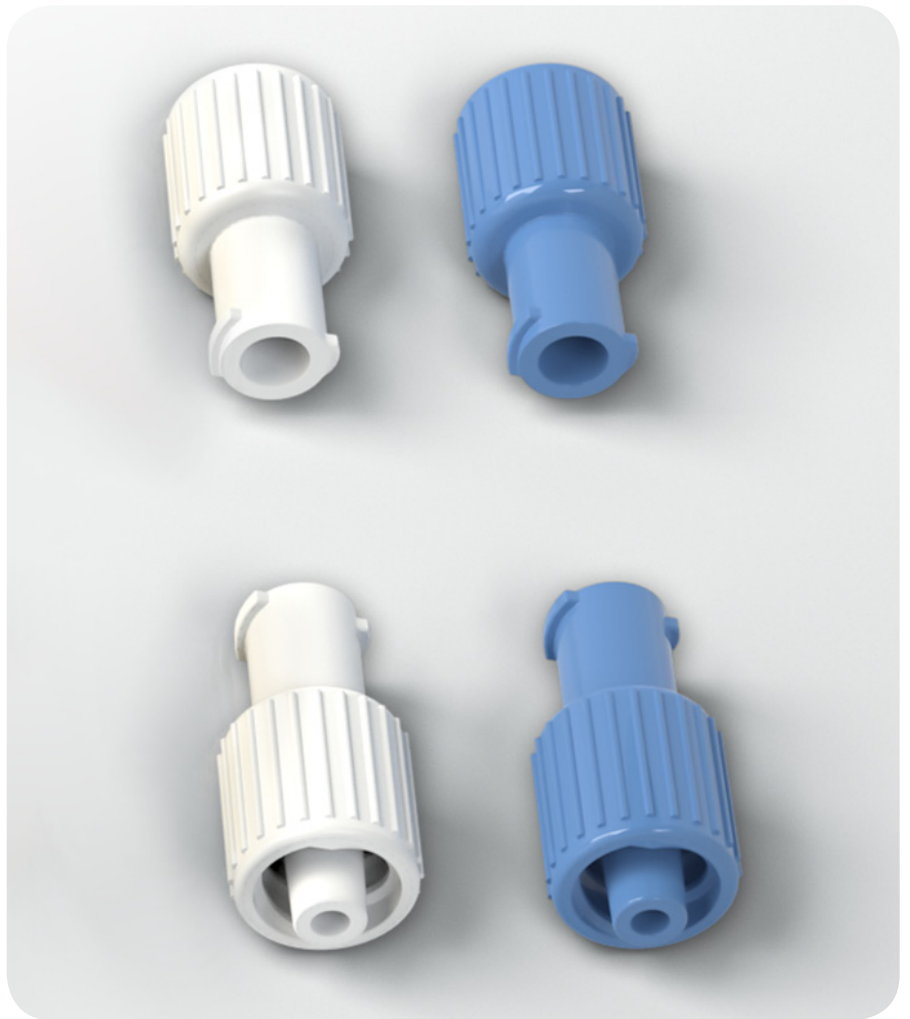
\* positively charged

Made in Germany

ISO 13485



## Components & Parts



## Components & Parts



## RoweCombiStopper

Art.-No.	Title	Material	Connection	PU (pcs./box) / pal.)
A-2307	RoweManifold-3	PSU	4 x fLL/mLL	25 / 2,800
A-10009	RoweValve	ABS	fLL/mLL	100 / 11,200
A-10013	RoweInjectStopper Yellow	PP	mLL	5,000 / 150,000
A-10014	RoweCombiStopper Red	PP	fLL/mLL	5,000 / 150,000
A-10015	RoweCombiStopper Blue	PP	fLL/mLL	5,000 / 150,000
A-10017	RoweCombiStopper White	PP	fLL/mLL	5,000 / 150,000
A-10018	RoweCombiStopper Orange	PP	fLL/mLL	5,000 / 150,000
A-10036	RoweValve HR	PC, blue silicone	Luer compatible fLL / mLL	100 / 12,200

- For secure connection to all Luer-Lock connectors
- Protection against contamination
- InjectStopper with injection port
- Check valve allows fluid to flow through it in only one direction

Made in Germany

ISO 13485



